

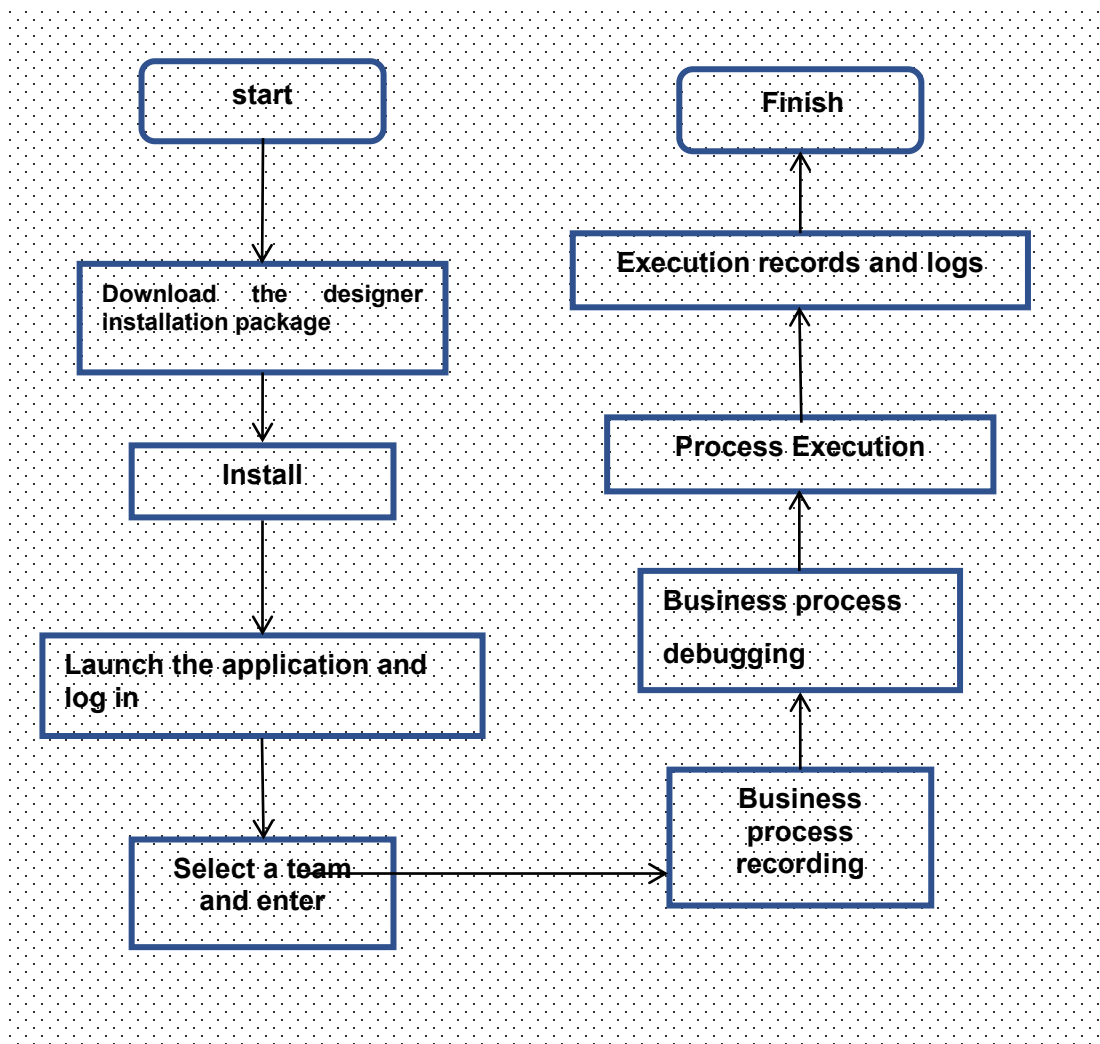
# Zezhong RPA-SaaS-Getting Started Tutorial

## 1. Introduction

### 1.1. Tool Introduction

Zezhong RPA consists of three parts: control center, designer, and executor. For individual users, this architecture is still relatively cumbersome, so we have launched a personal version of the SaaS service. Our company provides the control center and deletes the executor. Now you only need to download and install the designer to use Zezhong RPA to quickly and easily build RPA business processes for automation.

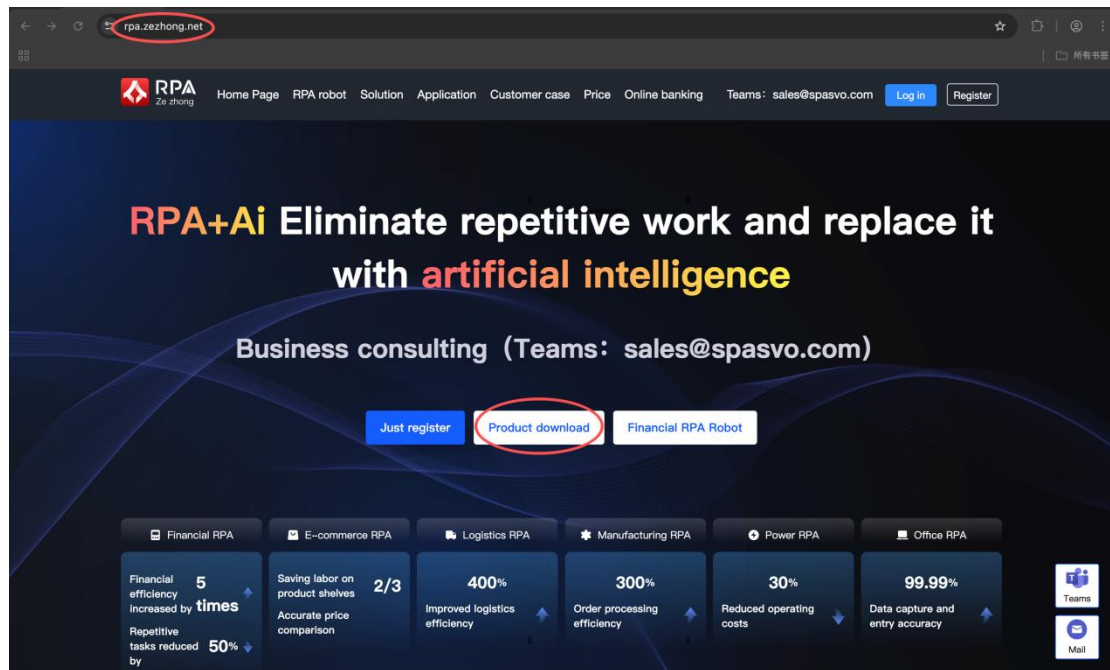
### 1.2. RPAClient Using Flowcharts



## 2. RPAclient Initial configuration

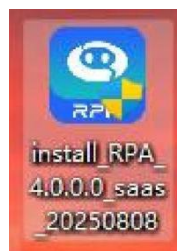
### 2.1. download RPAclient

- (1) Log in to the RPA website (<https://rpa.spasvo.com/>), click [Product Download] to download the RPAclient installation package;



### 2.2. Install RPAclient

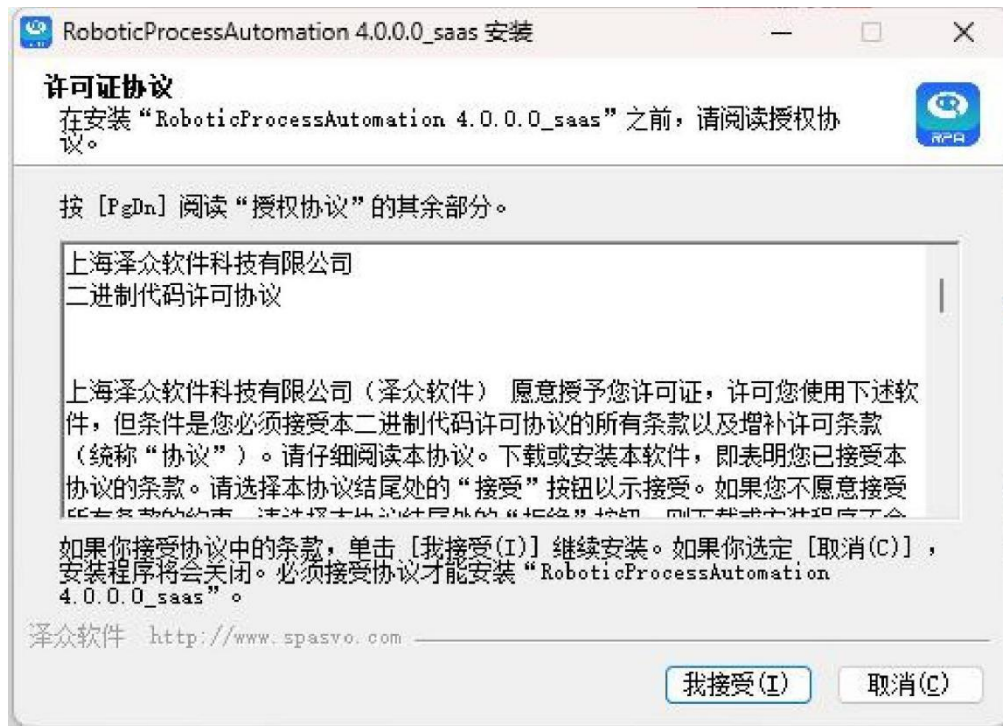
- (1) Find the installation package downloaded locally and double-click it with the left mouse button to enter the installation process;



- (2) Click OK



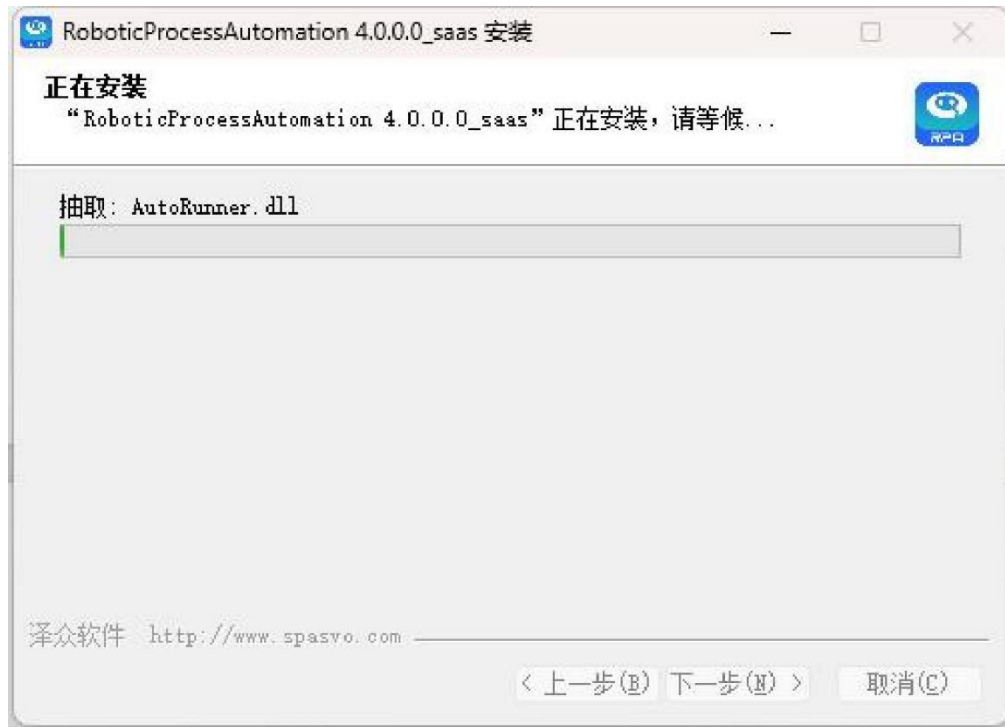
(3) Click [I Accept] to start the installation wizard



(4) Select the file installation directory and click [Install] to start the installation



(5) Wait for the installation to complete

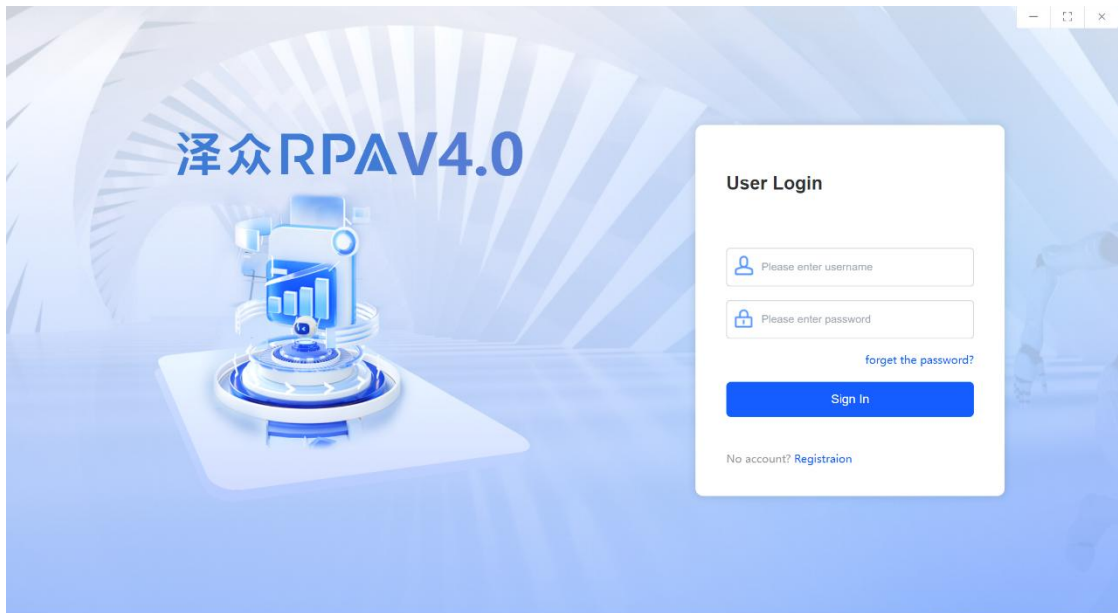


## 2.3. start up RPAClient

After the installation is complete, a startup shortcut will be automatically created on the desktop. Double-click the left mouse button to start it.;



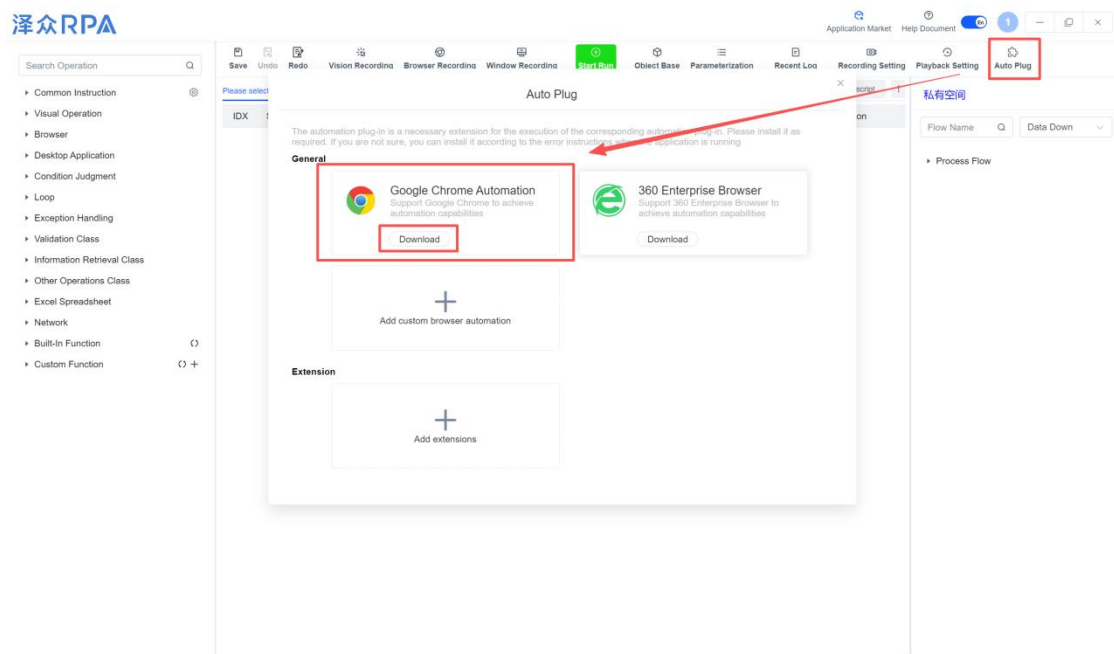
After startup, enter your account and password to log in;



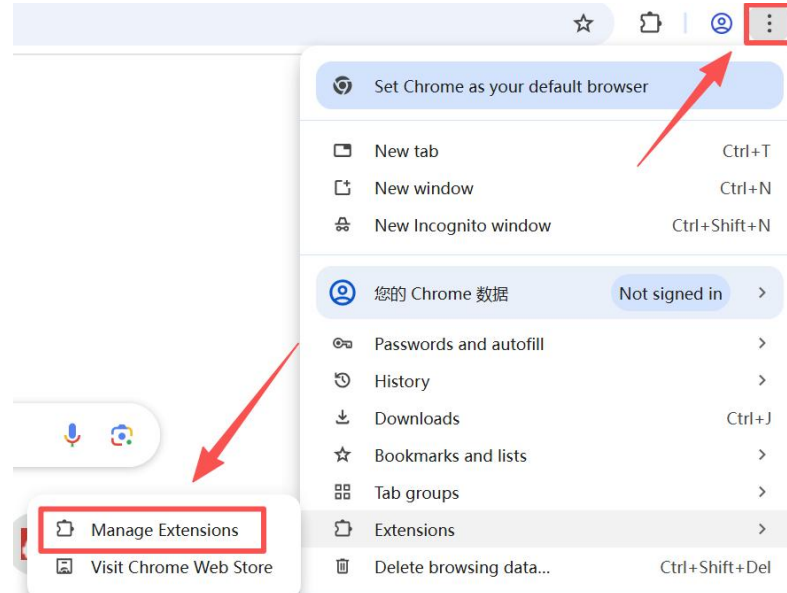
## 2.4. Plugin Configuration

### 2.4.1. chrome Browser Automation Plugins

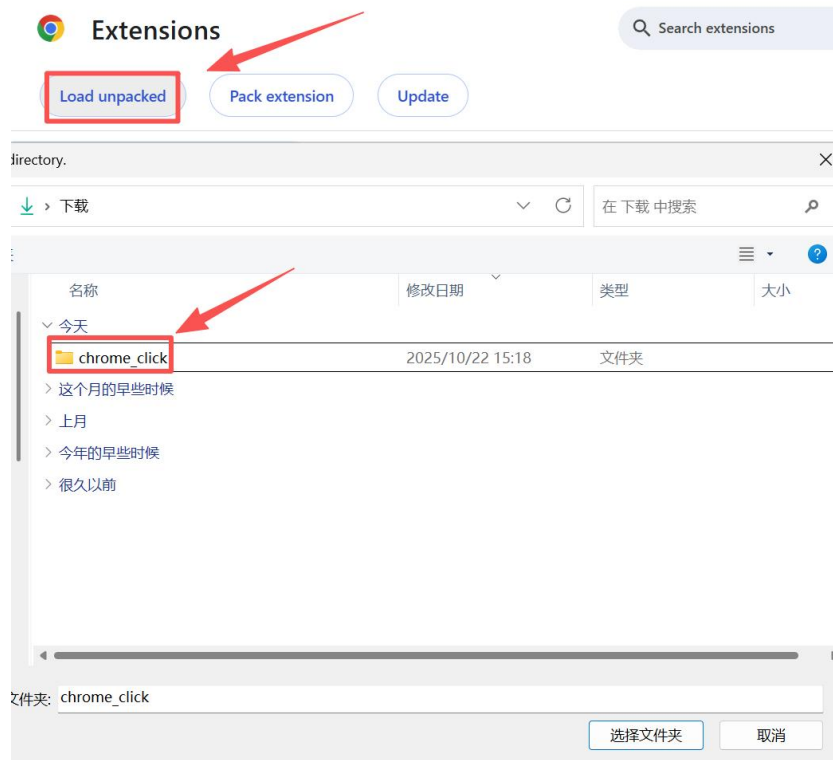
(1) Click [Automation Plugin] and select the plugin to download.



(2) Open the Chrome browser and click Manage extensions.

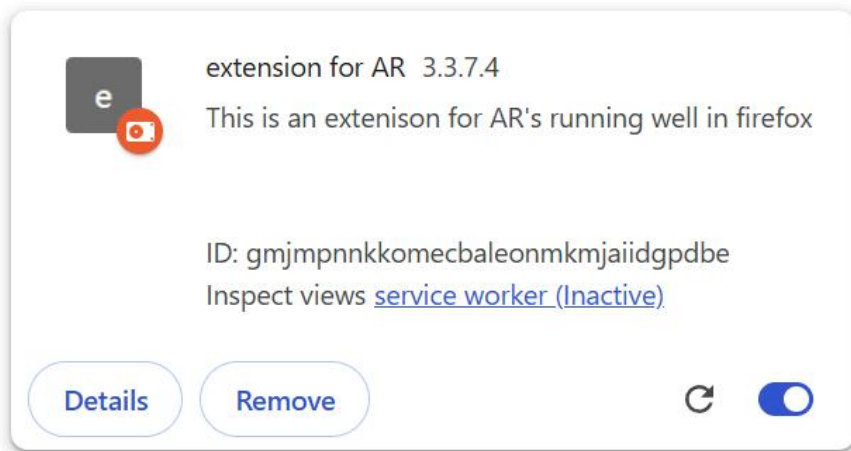


(3) Unzip the downloaded file and add it to your browser's extension



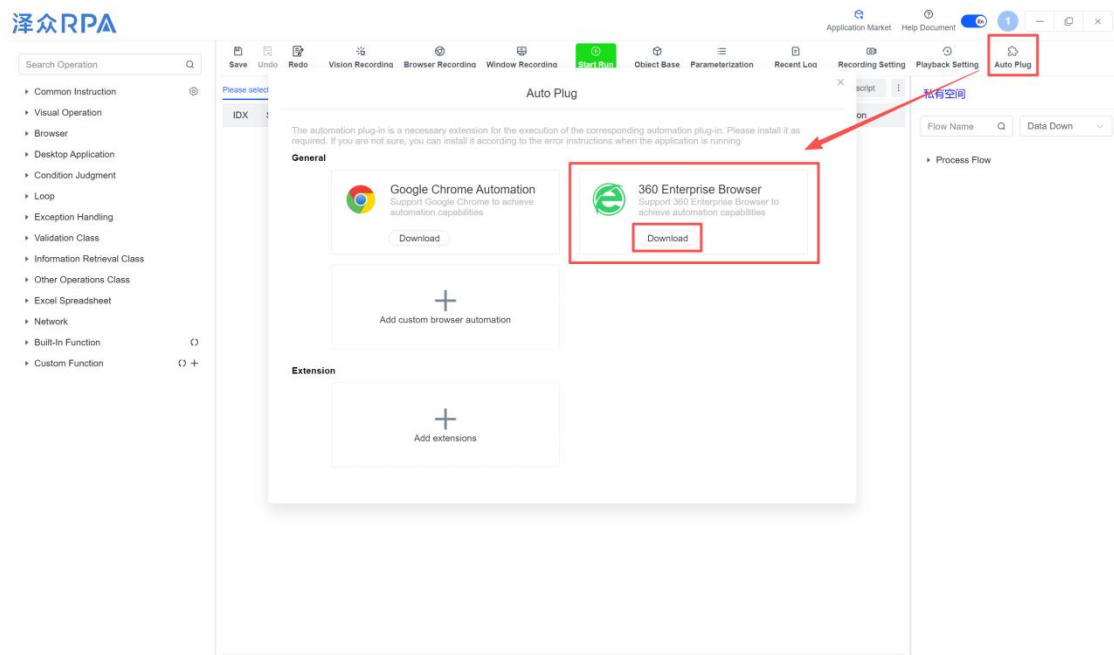
(4) Make sure the extension is in enabled mode

## All Extensions

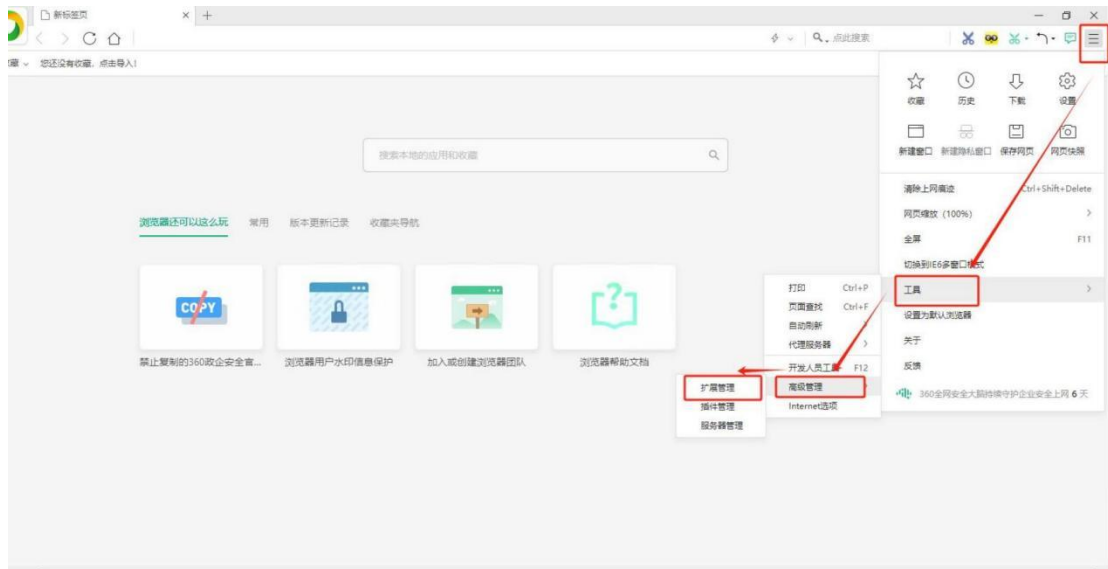


### 2.4.2. 360 Browser Automation Plugins

(1) Click [Automation Plugin] and select the plugin to download.



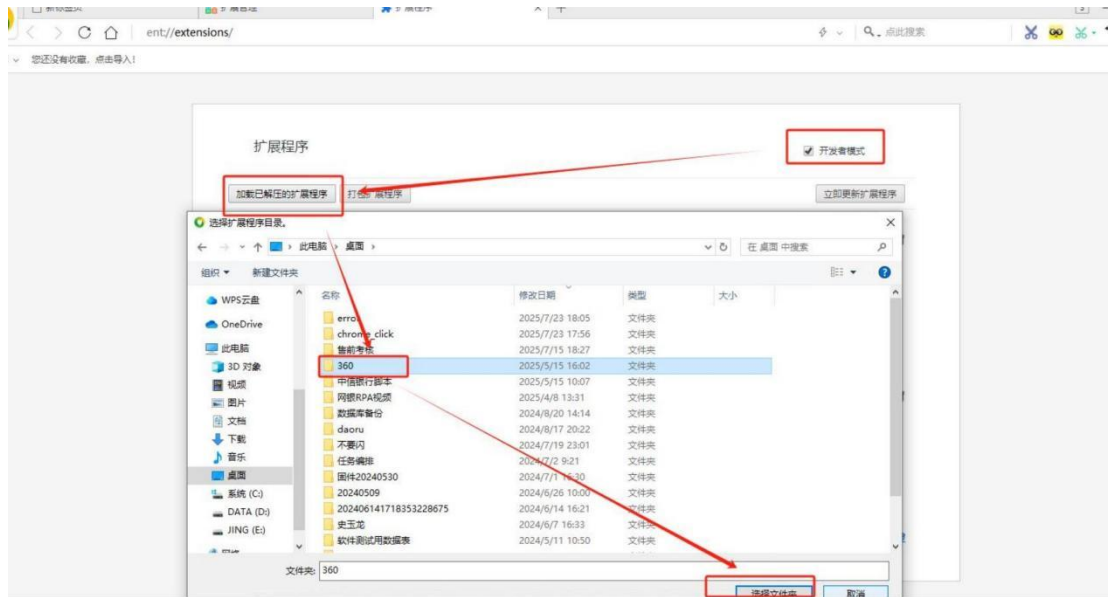
(2) Open 360 Browser, click Settings - Tools - Extension Management



(3) Click Advanced Management



(4) Open the developer mode and load the unzipped plug-in.



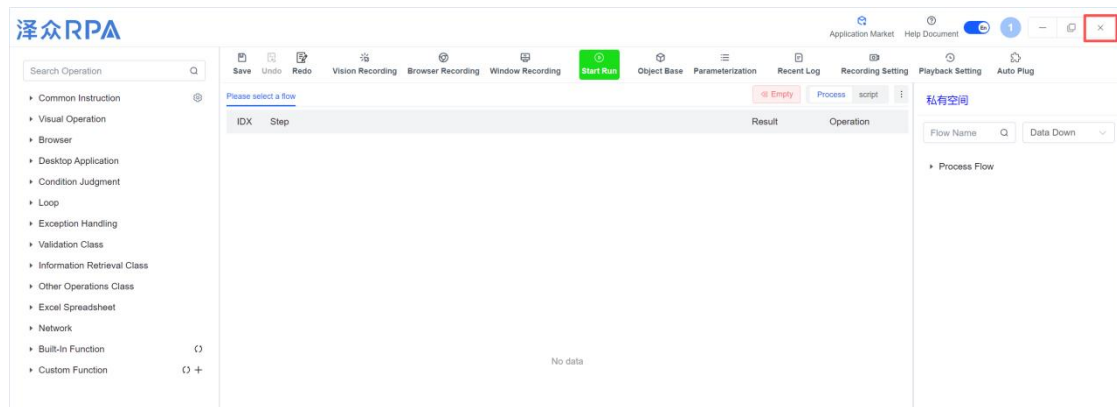
(5) Make sure the extension is in enabled mode



## 3. uninstall RPAClient

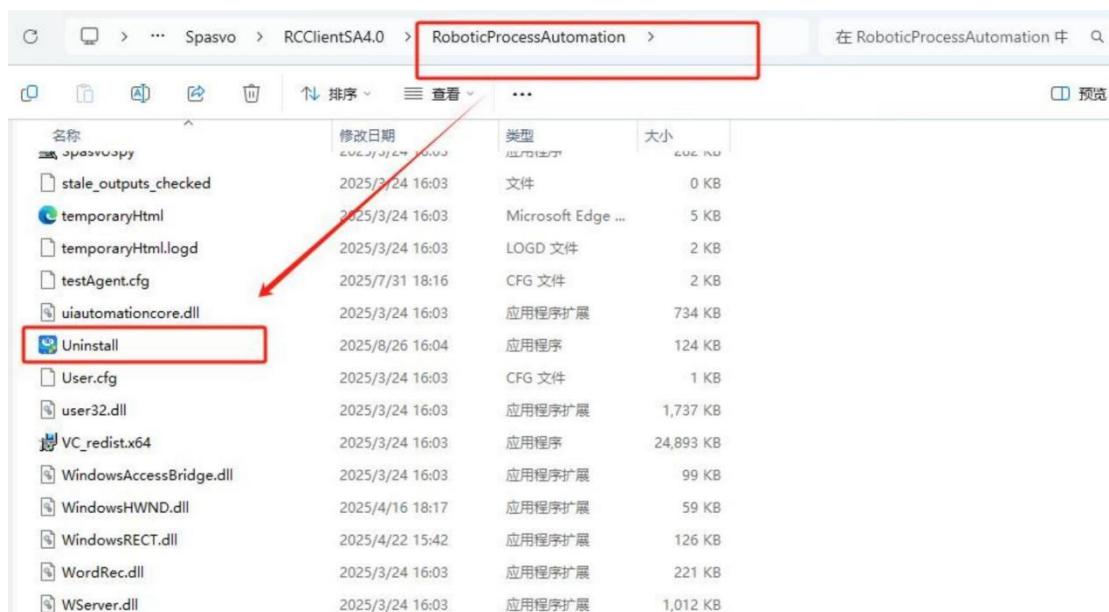
### 3.1. Confirm before uninstalling

Make sure the open RPAClient is closed, otherwise there will be uninstall residues. !



### 3.2. uninstall

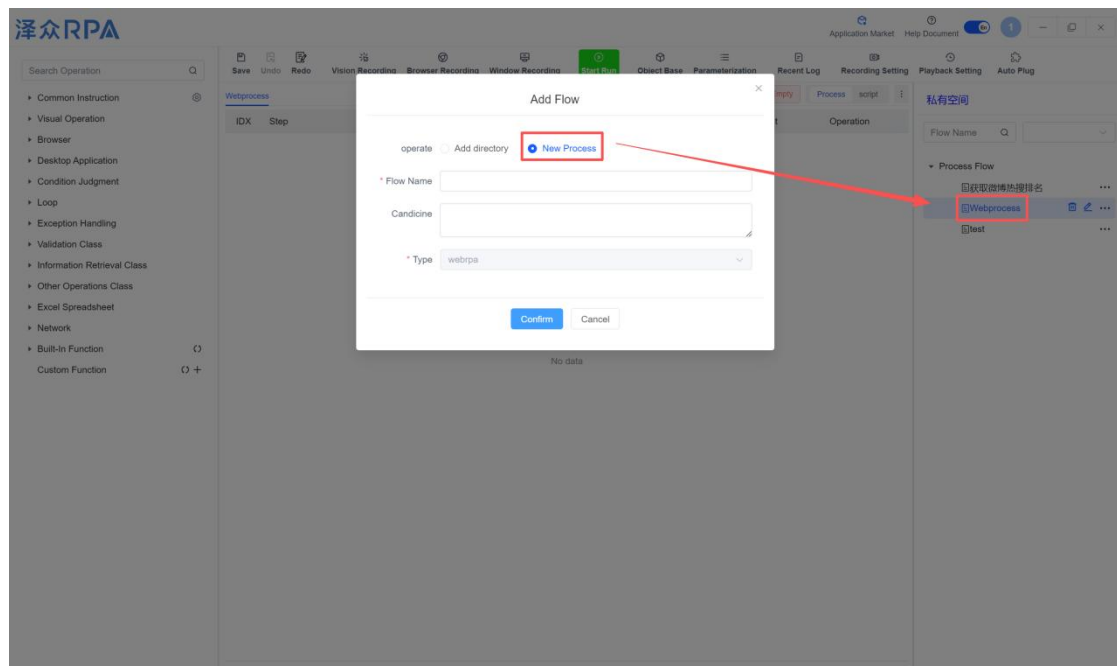
Enter the installation directory, find Uninstall.exe, and double-click it to enter the uninstall process;



## 4. Quick Start

### 4.1. Recording the first web process

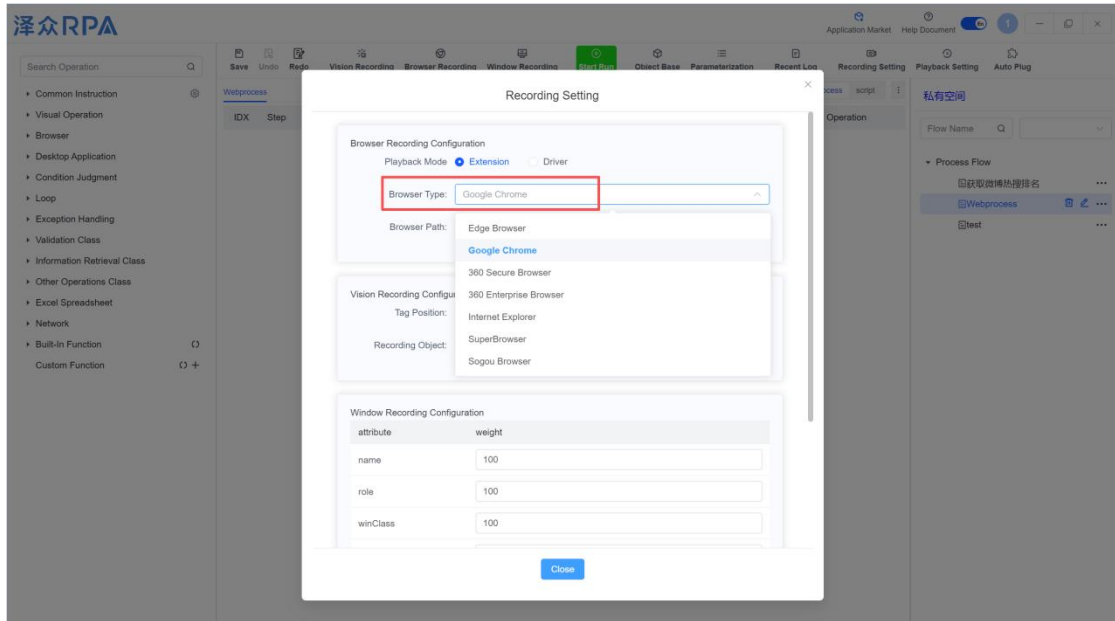
(1) Log in to the tool, select a workspace, and create a process



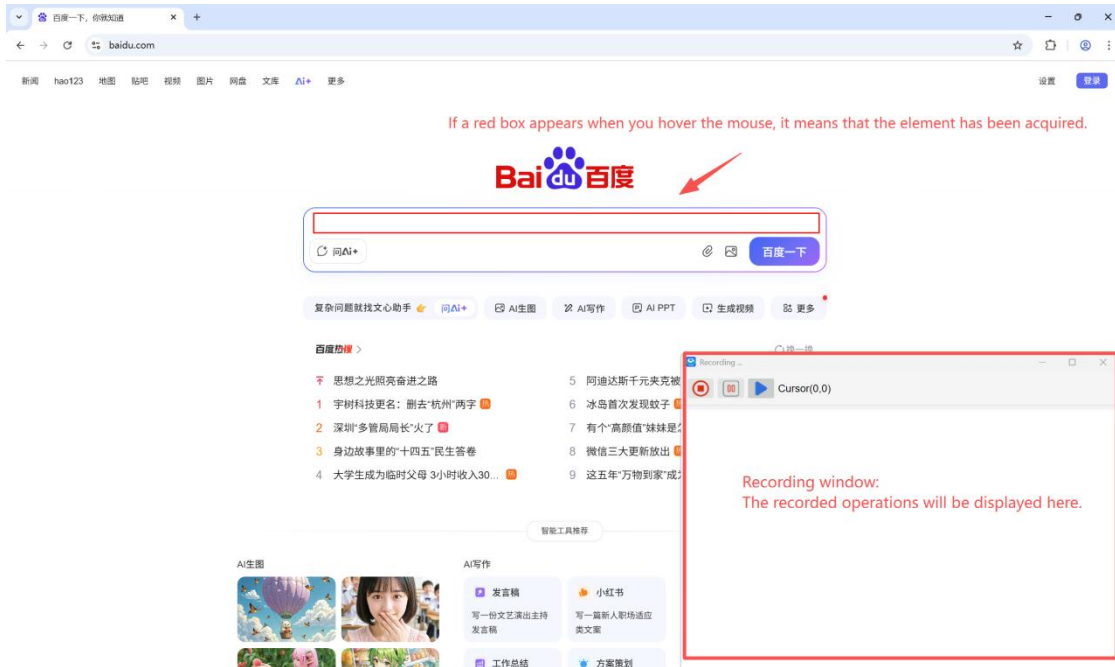
(2) Click [Recording Settings] in the menu bar to set up recording.:

- Execution mode: Select [Extension] or [Driver]. Both modes require the installation of extension programs in the corresponding browser. In addition to the extension program, the [Driver] mode also requires the installation of the driver program for the corresponding browser version.;
- Browser type: supports automated operations for Google Chrome, Edge Browser, Internet Explorer, 360 Security Browser, 360 Enterprise Browser, Purple Bird Browser, and Sogou High-Speed Browser;

➤ Browser path: You need to fill in the startup path of the browser program;

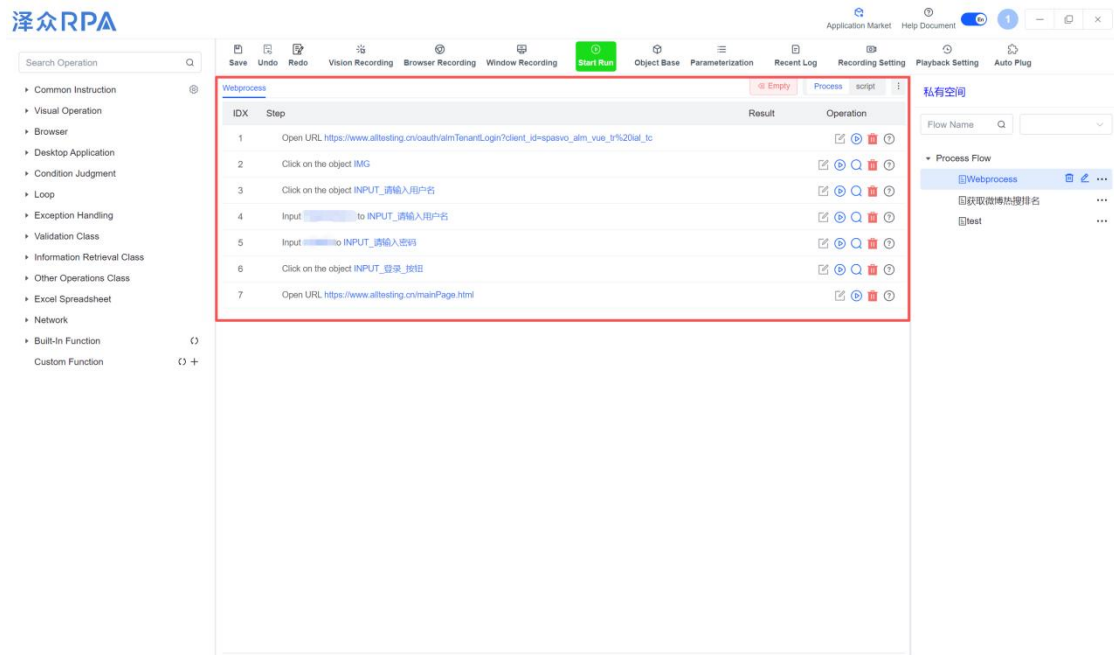


(3) Click [Browser Recording] in the menu bar, the tool will automatically open the browser, and the operations in the browser will be recorded.

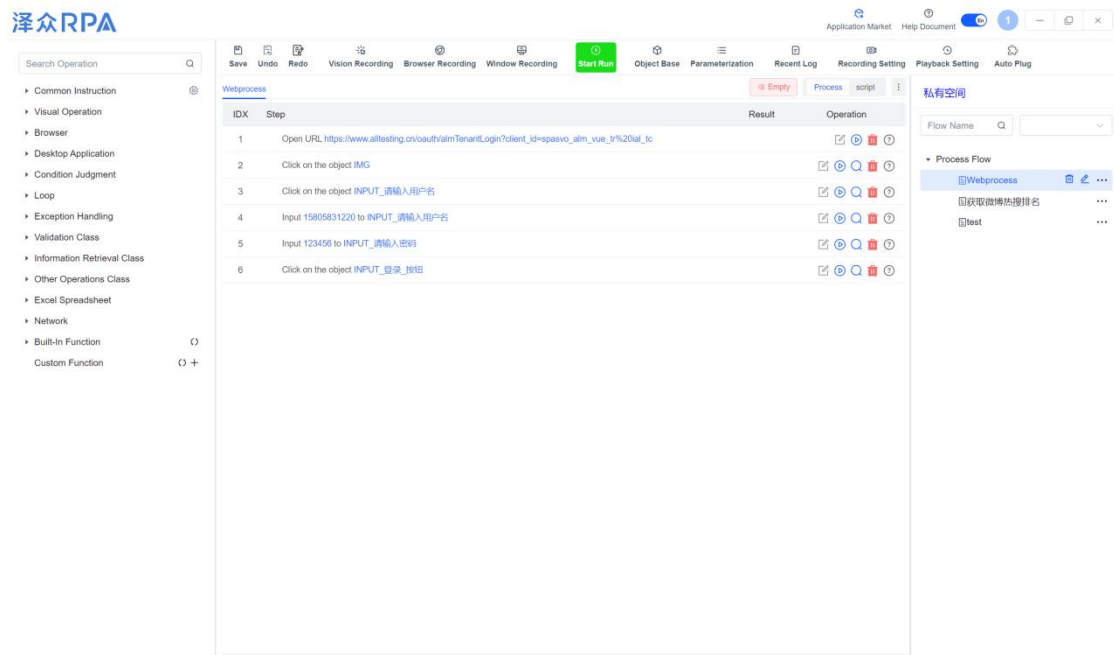


(4) Open the Zezhong Test Management System TC ( [https://www.alltesting.cn/oauth/almTenantLogin?client\\_id=spasvo\\_alm\\_vue\\_trial\\_tc](https://www.alltesting.cn/oauth/almTenantLogin?client_id=spasvo_alm_vue_trial_tc) ), Enter your account password to log in

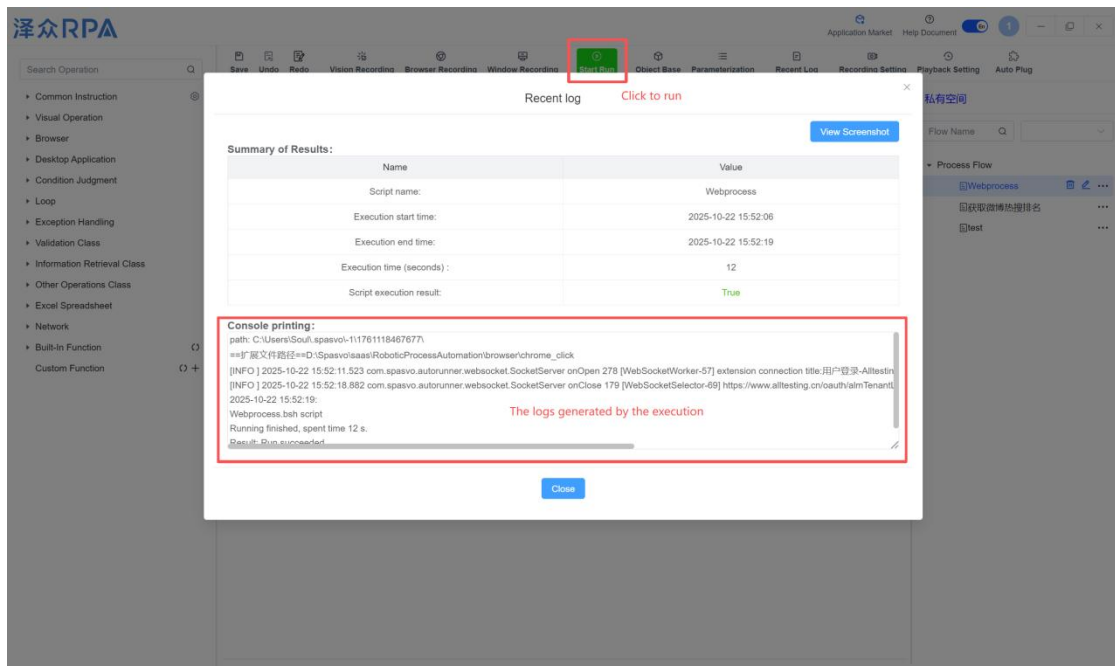
(5) End the recording and view the generated process



(6) Edit the process and delete redundant statements

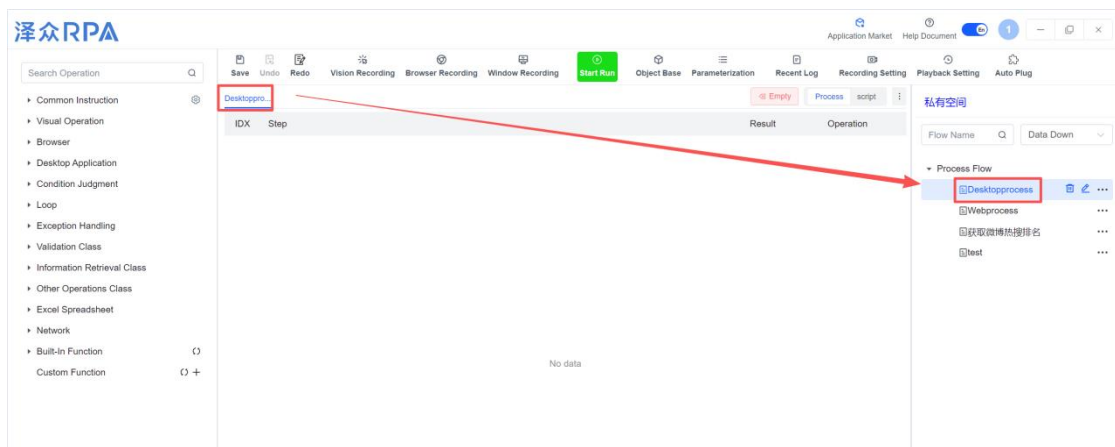


(7) Replay Execution

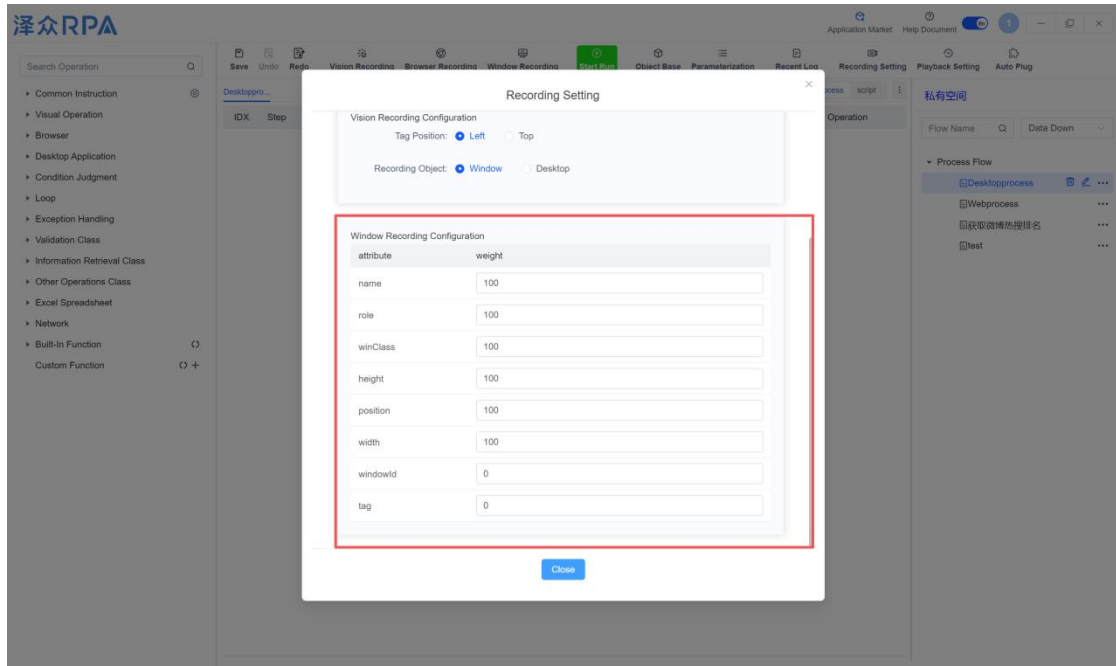


## 4.2. Recording the first desktop program process

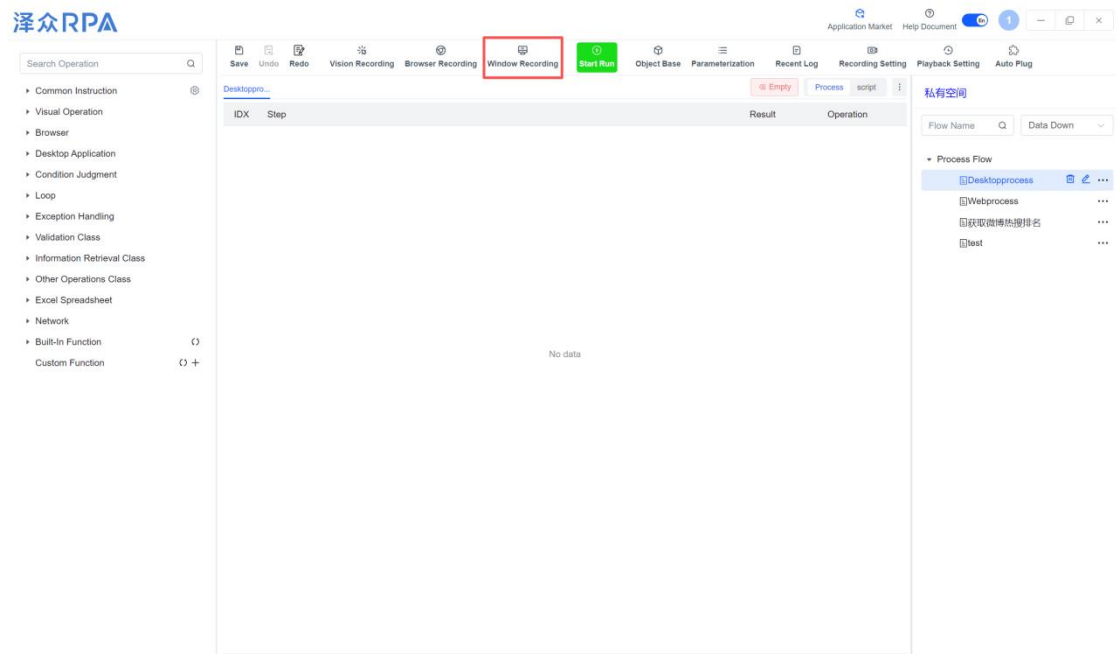
(1) Log in to the tool, select a workspace, and create a process



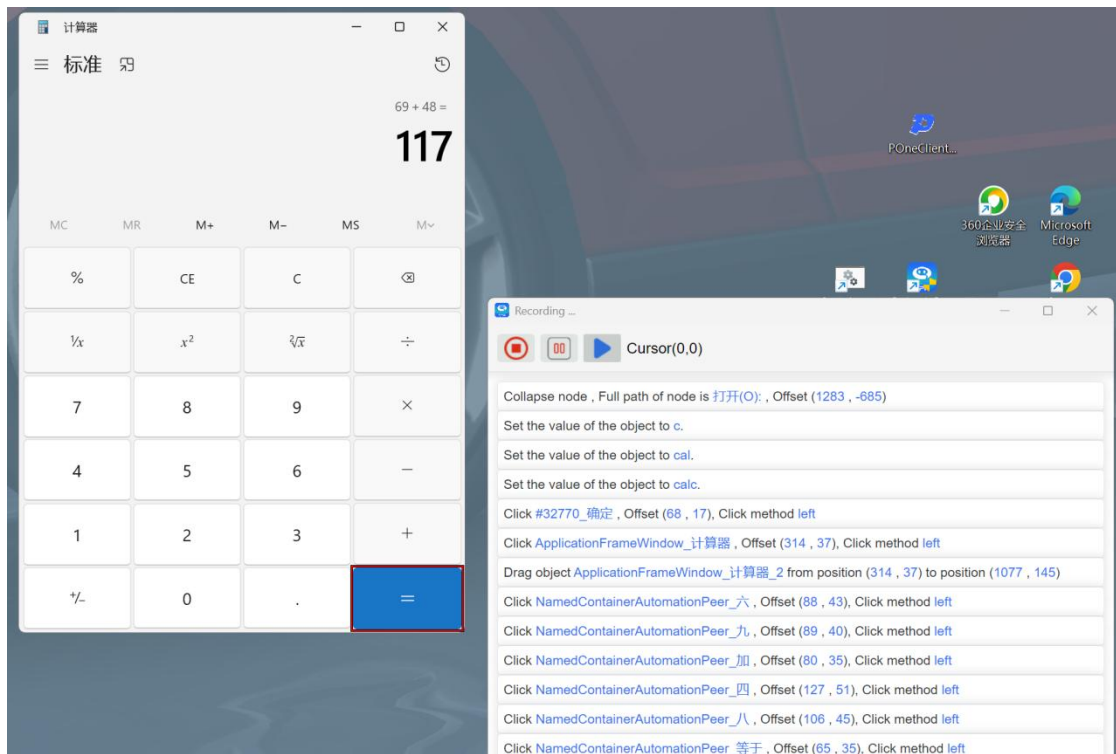
(2) Click [Recording Settings] on the menu bar to configure the recording settings. You can set the weight of the control properties in the desktop program. A weight of 100 means that this property will be used for verification during positioning.



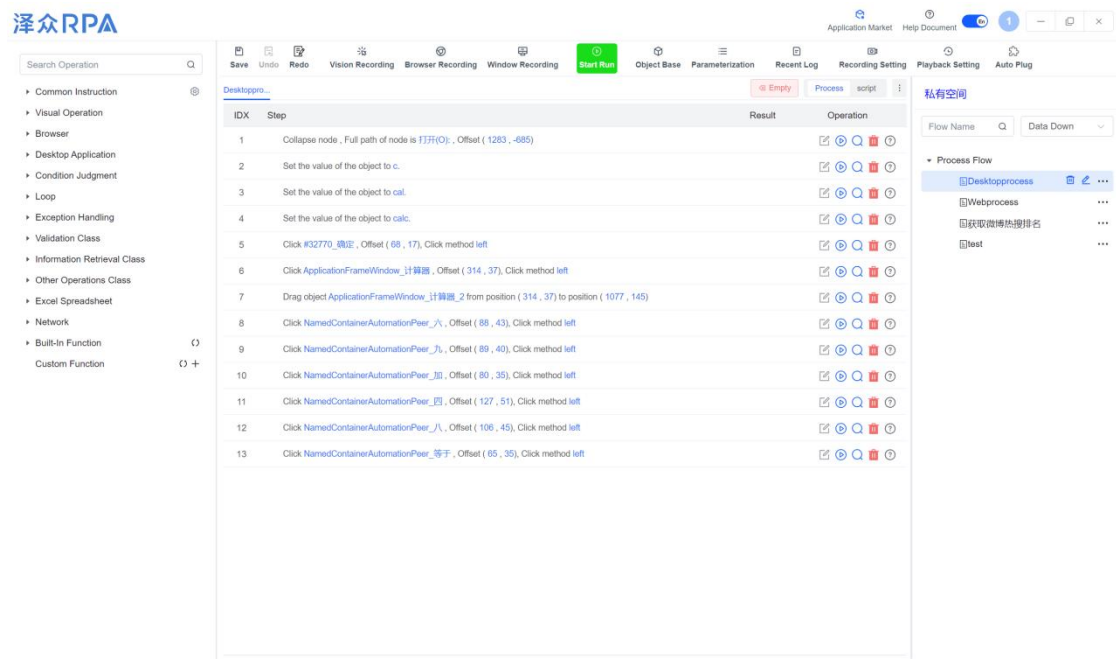
(3) Click Desktop Application Recording to manually open the desktop application for recording.



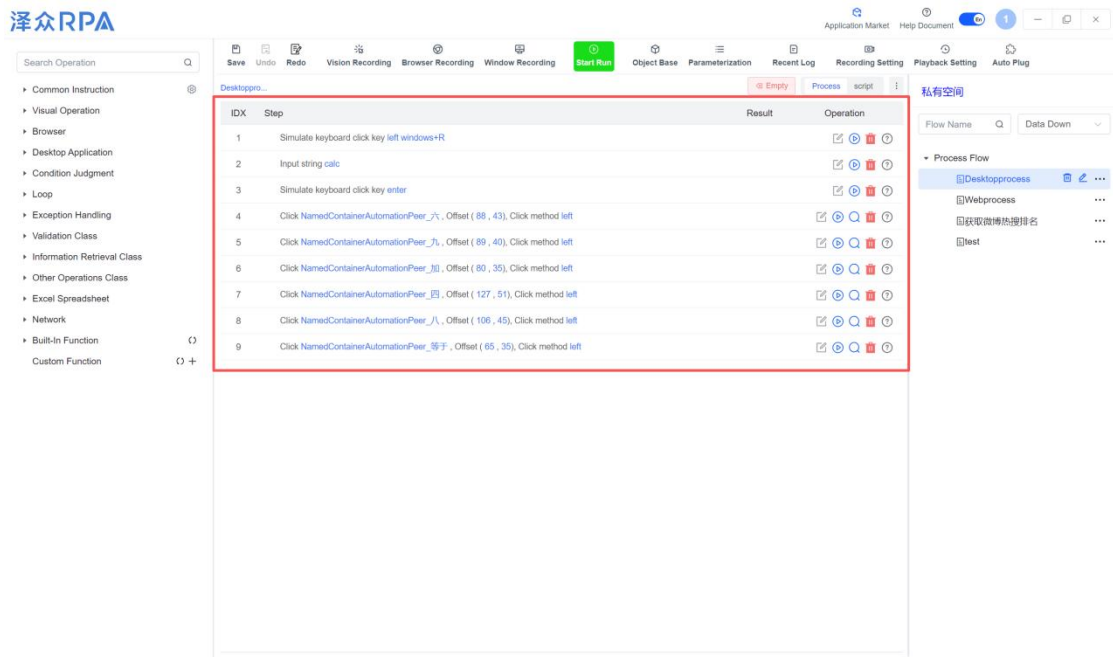
(4) Example: Start the calculator to perform calculations



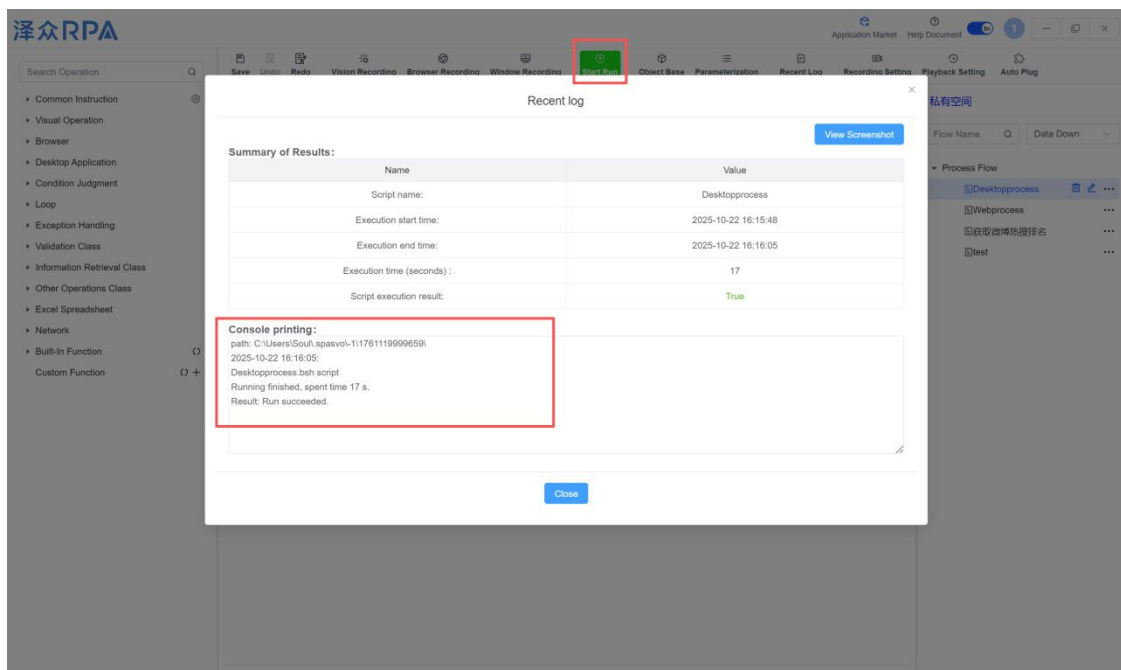
(5) End the recording and view the generated process



(6) Edit the process, delete the redundant statements and edit



## (7) Replay Execution



## 4.3. Visual recording non-standard controls

For non-standard controls or controls that cannot be recorded

directly due to other reasons, you can use the [Visual Recording] method to complete the acquisition of the control;

Visual recording: Use openCV and OCR technology to analyze the specified page to obtain the elements on the page and record them for subsequent clicks, assignments, and other operations;

The following is a demonstration of [Visual Recording] using the login of TestOne, a Zezhong automated testing platform.:

- Use the browser to open the Zezhong automated testing platform TestOne;



- Use [Visual Recording], after starting recording, take a screenshot to save the interface to be recorded;



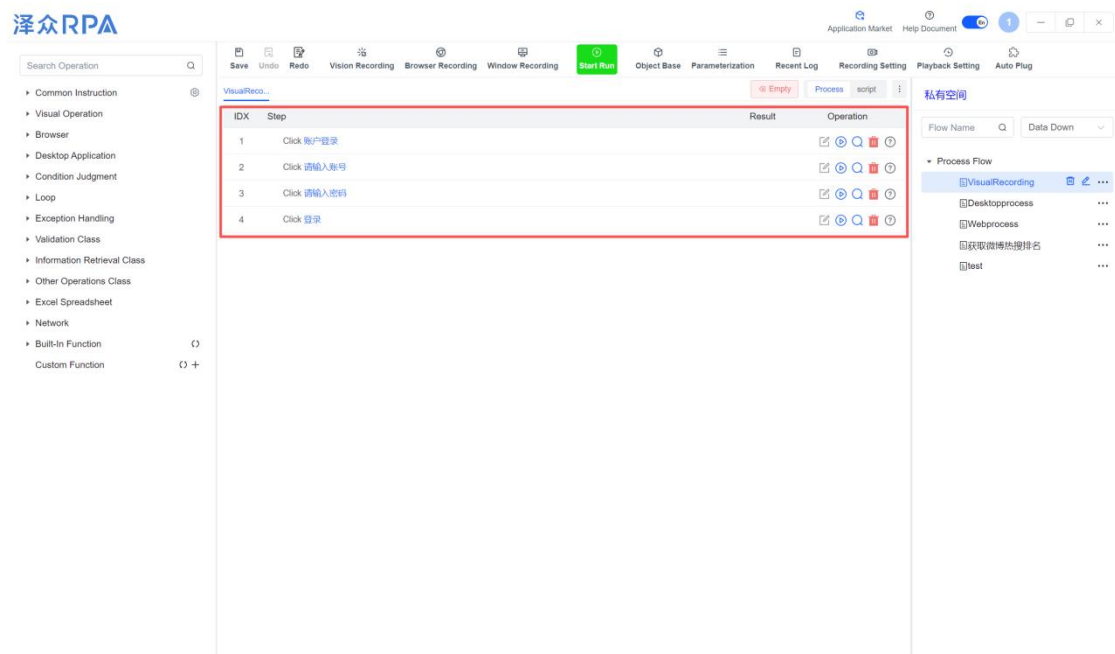
- After the screenshot is completed, wait for the tool to automatically analyze the control information



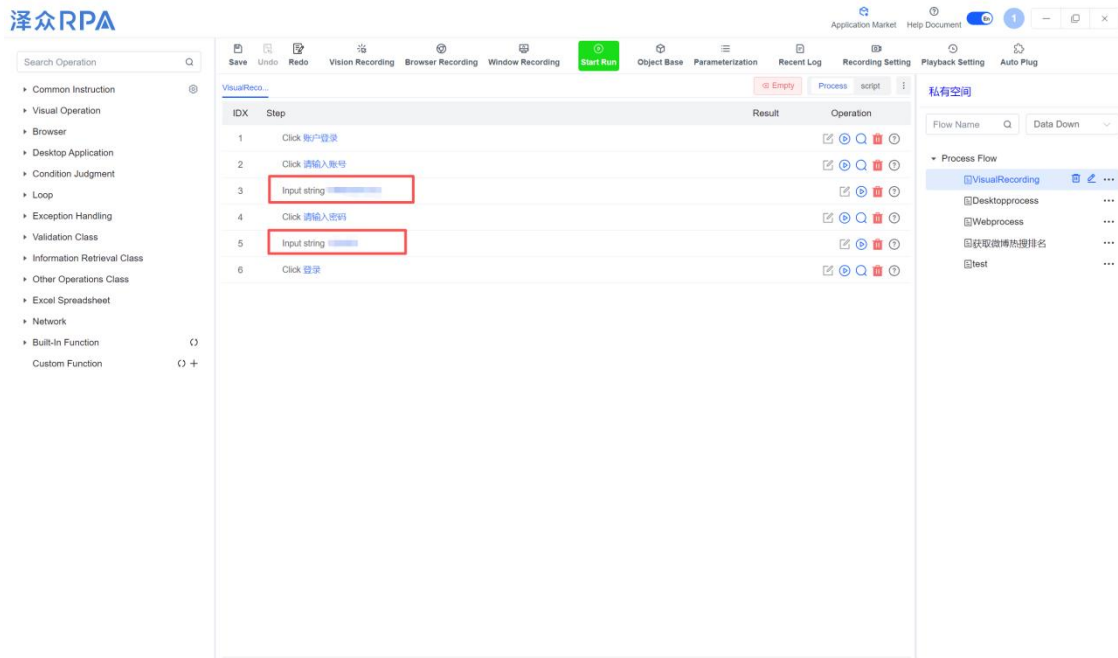
- After the analysis is completed, you can click the control to be recorded on the interface. At this time, you can see the corresponding operation information automatically generated in the recording window.;



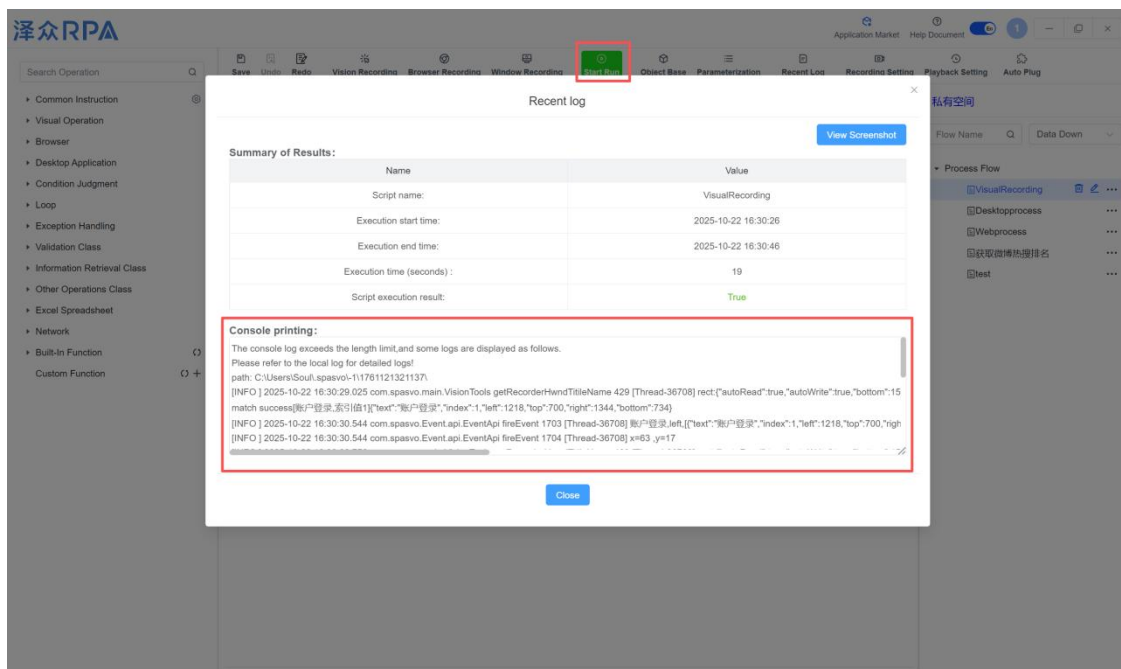
➤ End the recording and view the generated process;



➤ Improve the process and add statements for entering account and password



➤ Replay execution and view results

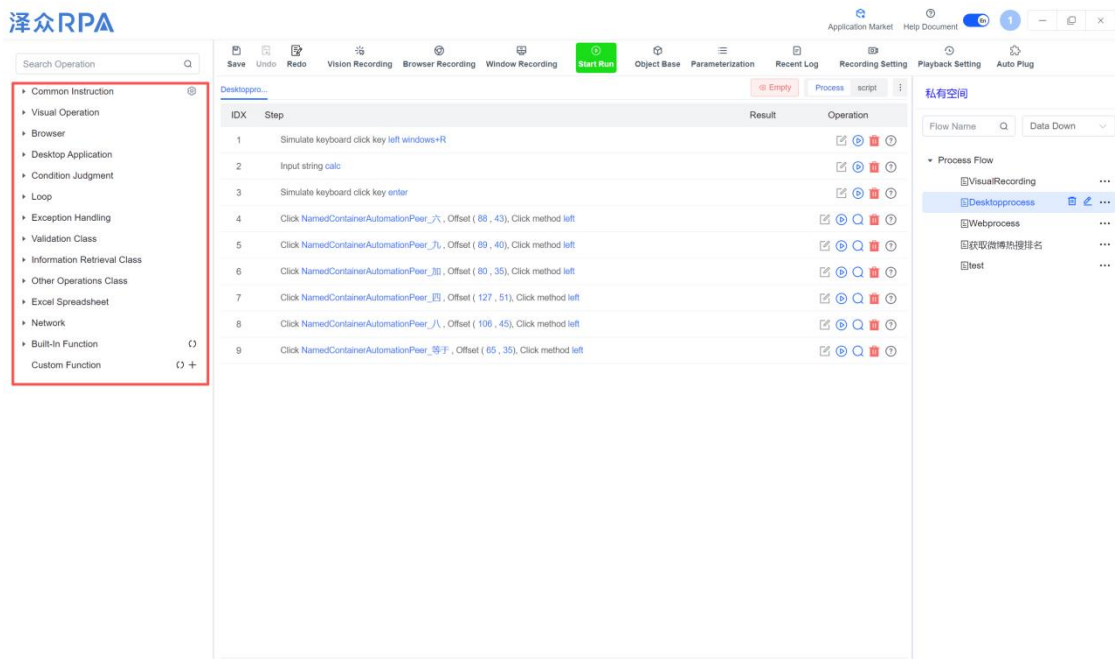


#### 4.4. Drag and drop configuration

In addition to the three recording methods described above, we also support direct drag and drop configuration. Currently, the built-in commands are divided into eleven categories: [Visual Operation] (corresponding to visual recording), [Browser] (corresponding to browser recording), [Desktop Application] (corresponding to desktop program recording), [Conditional Judgment], [Loop], [Exception Handling], [Verification], [Get Information], [Other Operations], [Excel Table], and [Network]. In addition, [Built-in Function] and [Custom Function] are provided for user-defined command operations.;

Note: Most of the three types of instructions, [Visual Operations], [Browser], and [Desktop Applications], are

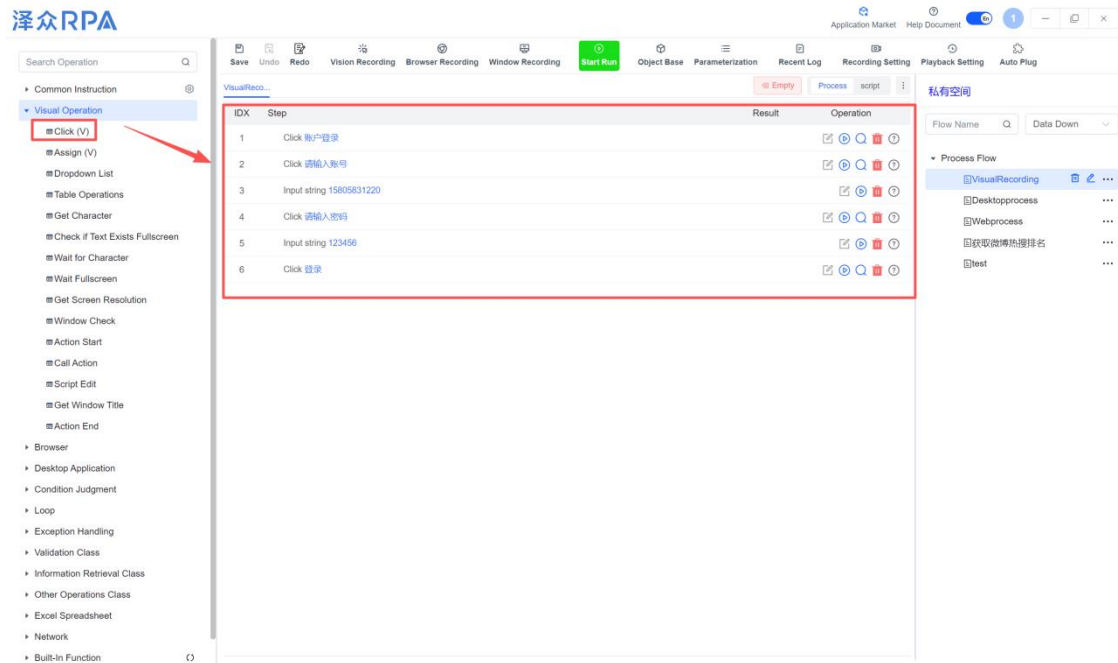
You need to have an object recorded in the corresponding mode to configure it;



The specific process of drag and drop configuration is as follows:

- First find the command you want to configure in the command list

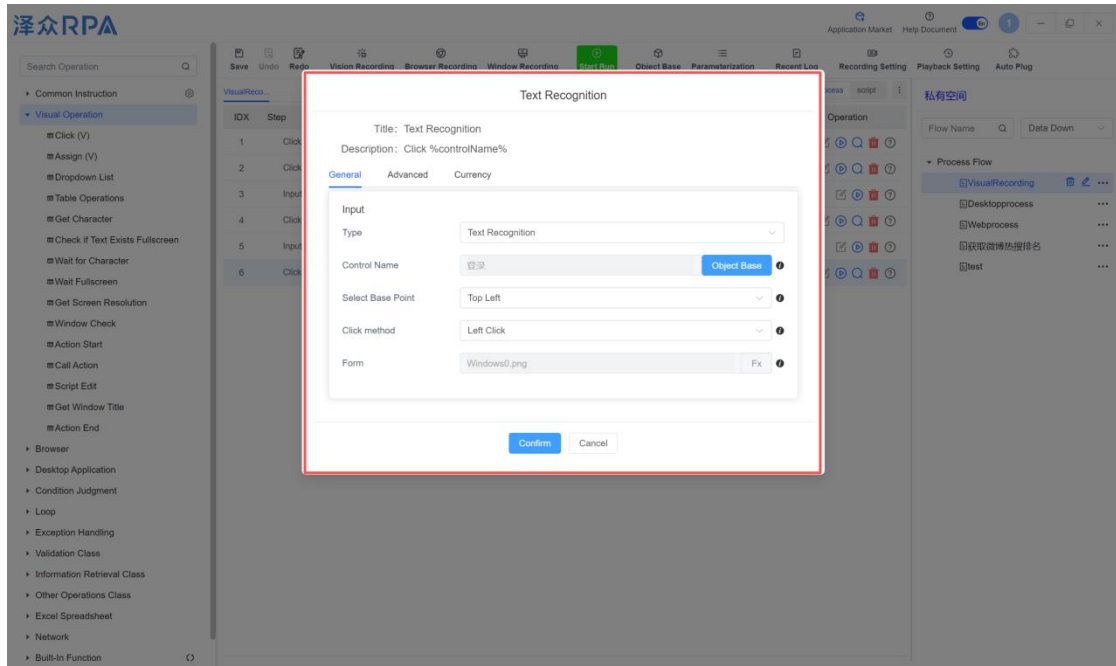
(here we take [Visual Operation] - [Click] as an example), then double-click it or hold down the left mouse button and drag it to the script area;



➤ Make corresponding configurations in the configuration interface (see the help manual for detailed instructions):

- Type: Optional: [Text Recognition], [Dynamic Text Recognition], [Dynamic Icon Recognition], different types have different configuration parameters;
- Control name: Select the control to be clicked from the object library;
- Select base point: The default is acceptable and no change is required unless there is a special situation;
- Click mode: Set the click mode for the control. You can choose [Left click], [Left double click], [Right click], [Right double click];

After the configuration is completed, click OK to generate the corresponding instruction operation in the process area;



➤ View the generated instructions;

